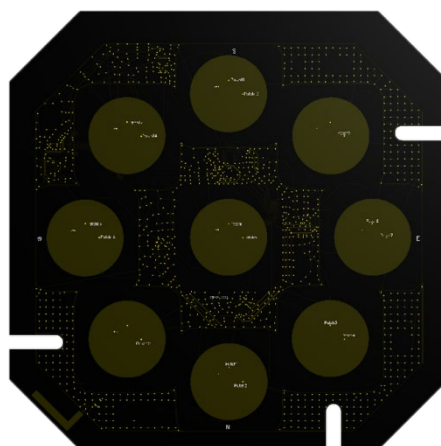


# 2.4GHz AOA + Bluetooth Antenna

## FEATURES



- 9 antennas array
- 0.1° 3D Gyroscope
- LED alarm indication
- For AOA terminal
- Customizable
- 3.3V DC



## PRODUCTS

Part No.	Weight	Dimensions (L x WxH)	Color
M01-0601190R0A	146g	190*190*2.0mm	Black

## SPECIFICATIONS

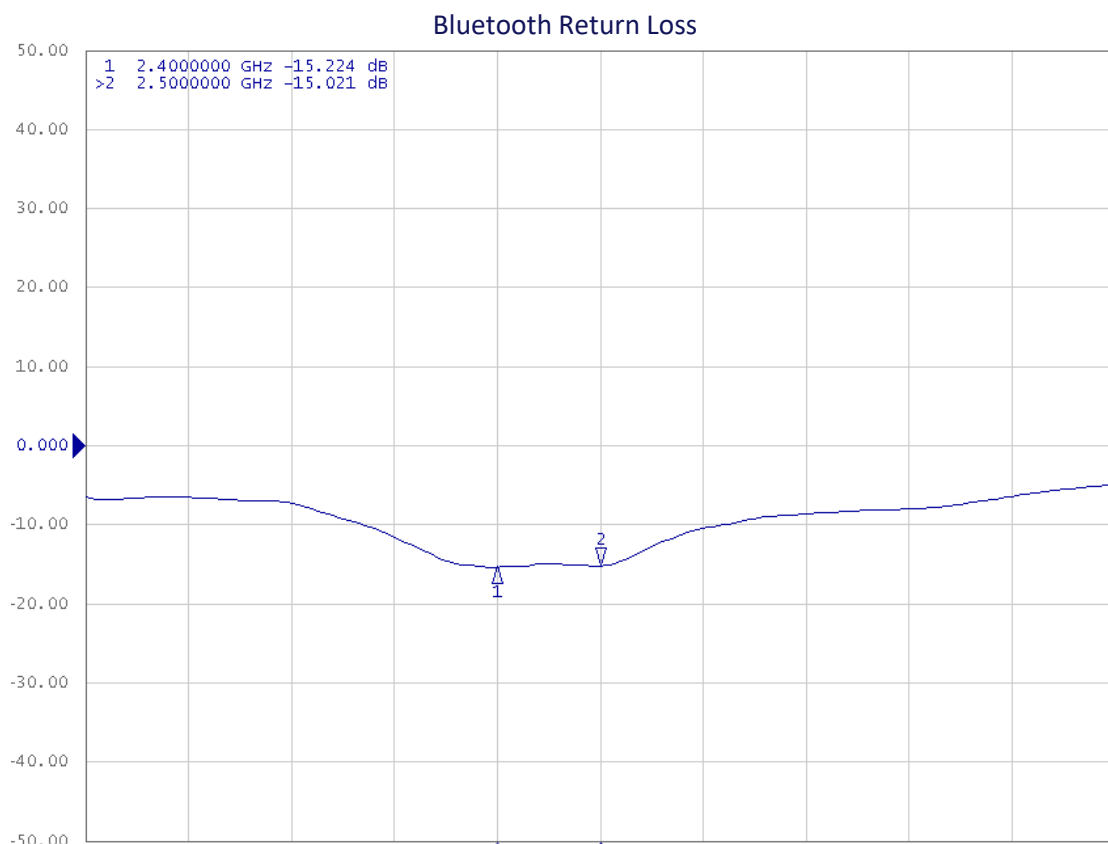
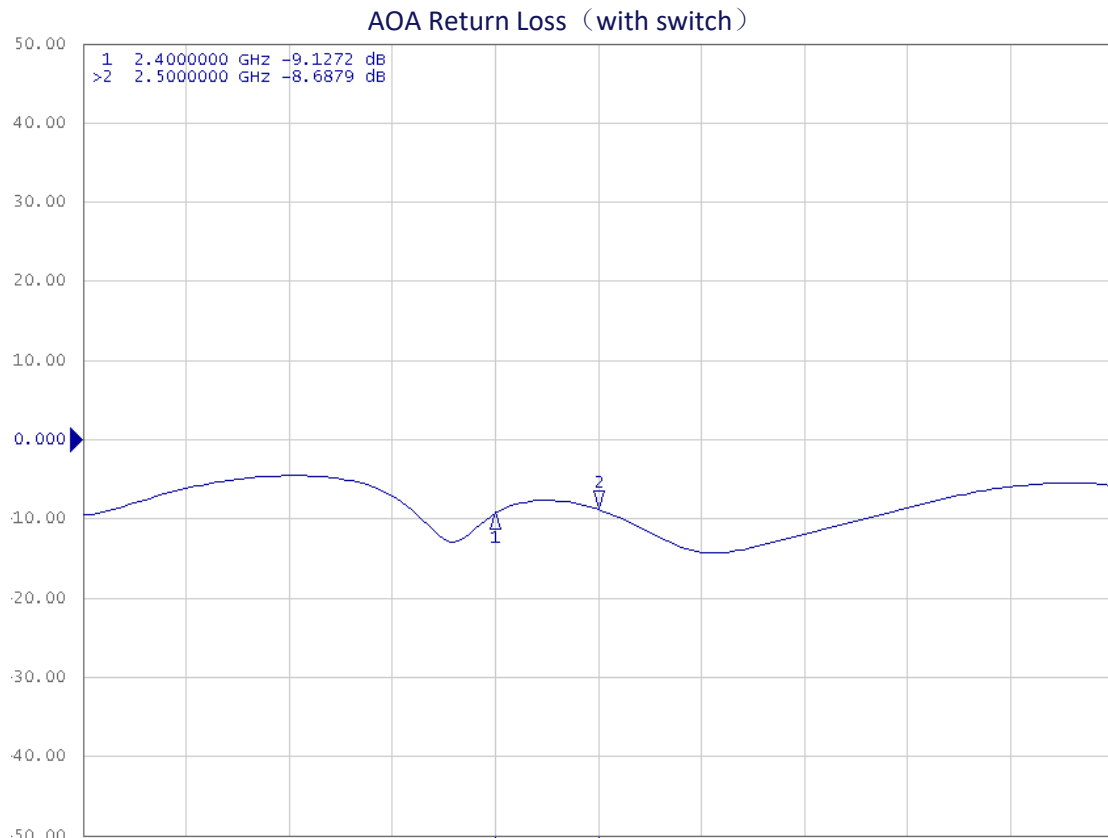
PARAMETER	SPECIFICATION
Frequency Bands, MHz	2400-2500
VSWR (Max)	3.0:1
Peak Gain, dBi (Typ)	Up to -1.68
Nominal Impedance	50 $\Omega$
Max Power (ambient temp of 25°C)	10 Watts
Azimuth Beam Width (deg)	60°
Polarization	Linear
Color	Black
Storage Temperature Range (°C)	-40° C to +85° C
Operational Temperature Range (°C)	-40° C to +85° C
Material Substance Compliance	REACH/RoHS Compliant
HSCODE	8517707090
USHSCODE	8517620010
UPC	

MyAntenna RF Technology Co., Ltd

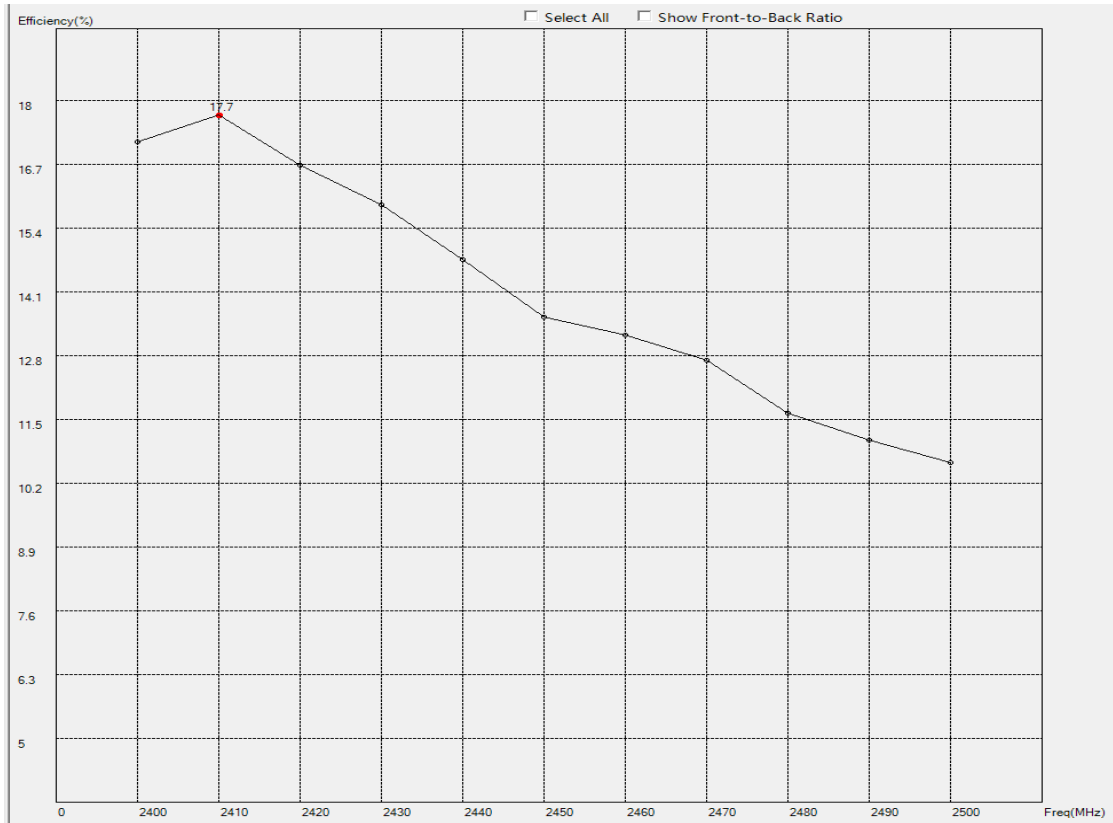
ADD: No.RM 405, R3-A Building, Shenzhen High-Tech Park, Nanshan, Shenzhen, P.R. China.

TEL: +86-0755-86503881 FAX: +86-0755-27801677 E-mail: [nfc@myantenna.com](mailto:nfc@myantenna.com)

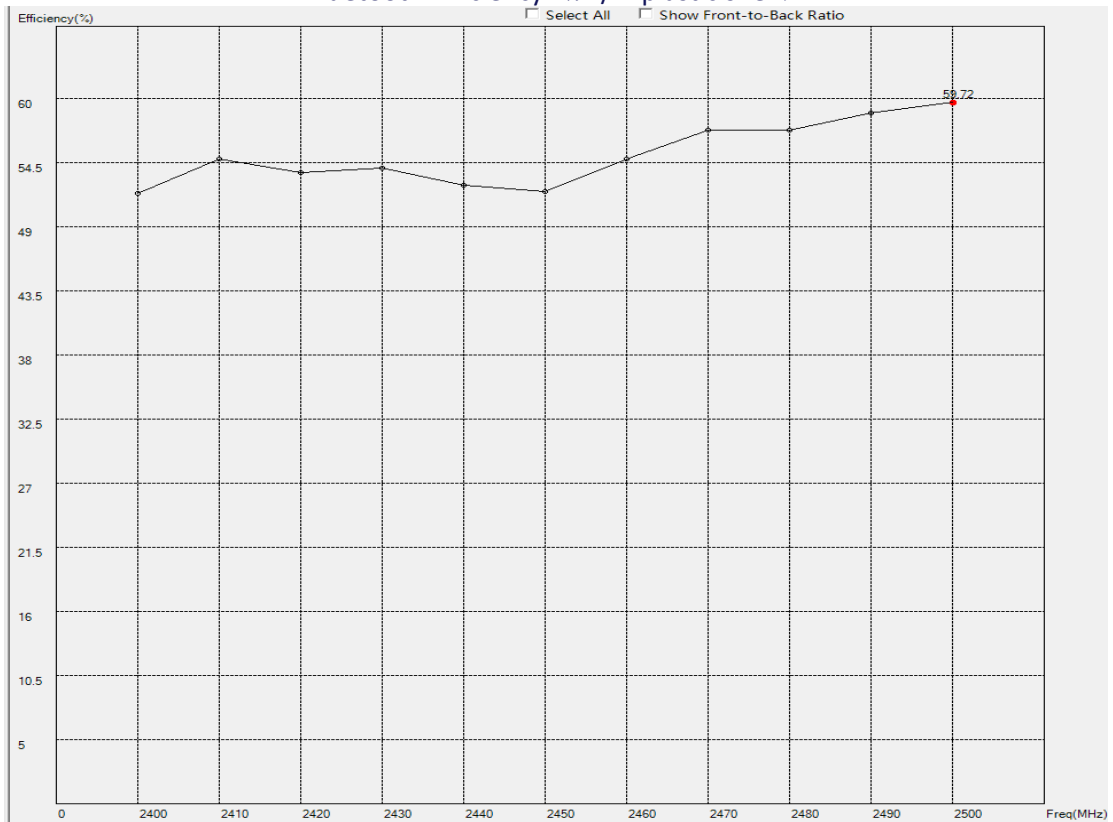
## ELECTRICAL DATA



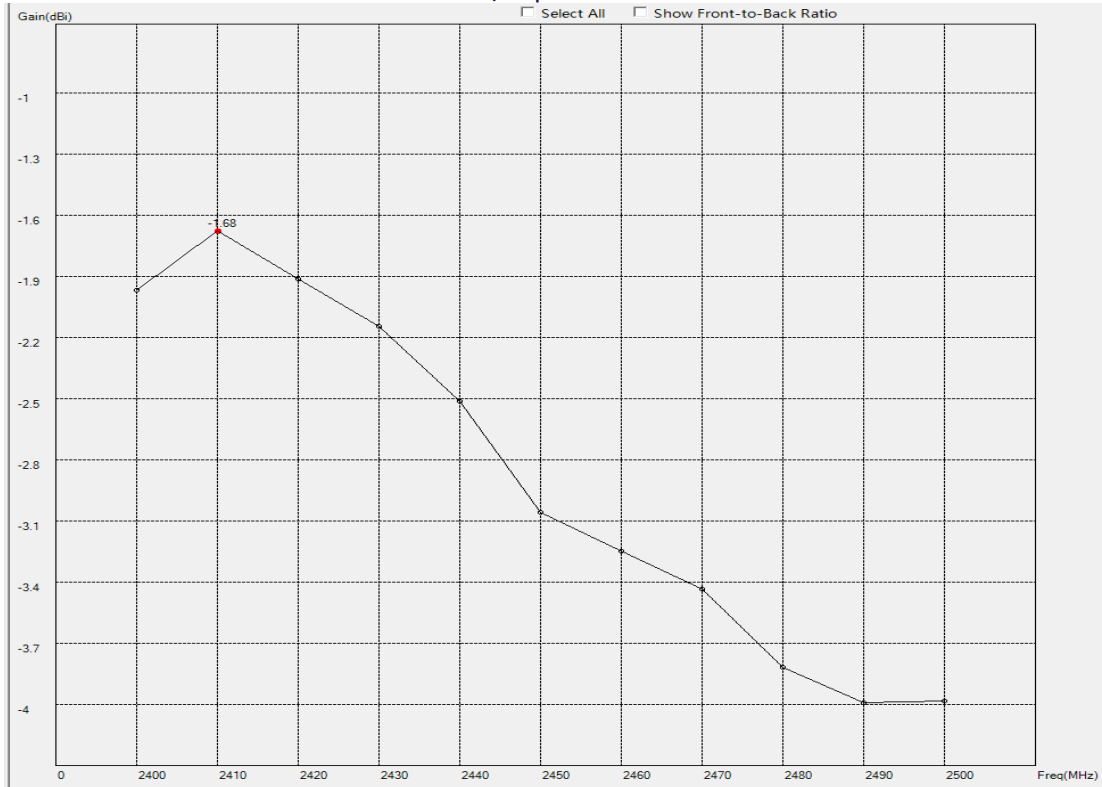
AOA Efficiency (% /In plastic shell, with switch)



Bluetooth Efficiency (% /In plastic shell)



AOA Peak Gain (dBi/In plastic shell, with switch)

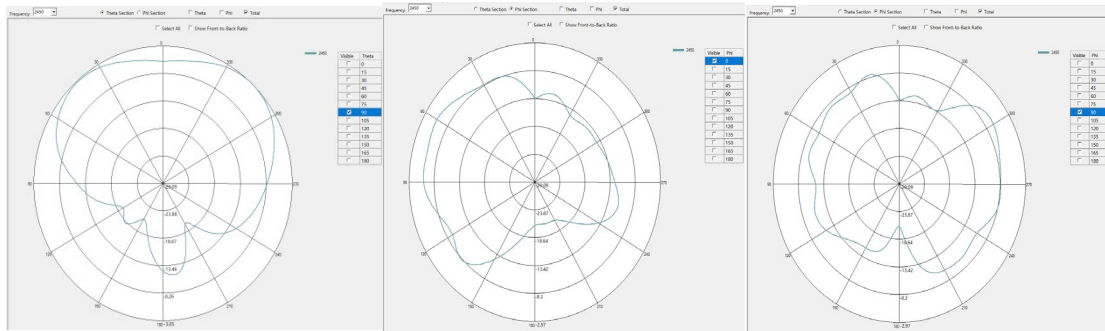


Bluetooth Peak Gain (dBi/In plastic shell)

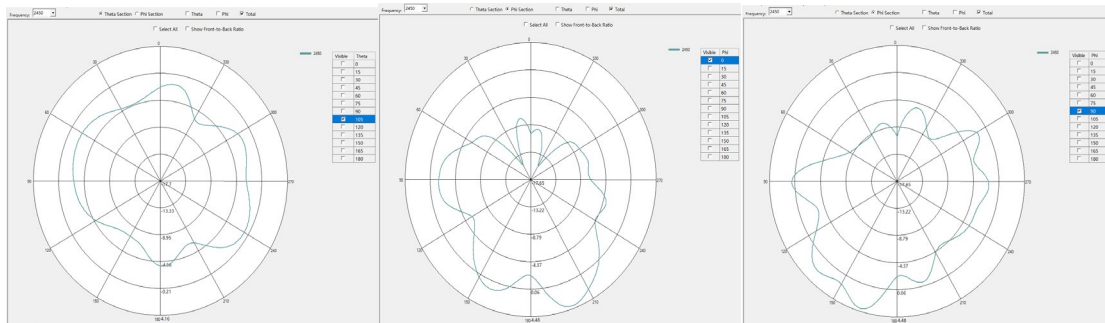


**RADIATION PATTERNS**

### AOA 2D Radiation Pattern at 2450MHz



### Bluetooth 2D Radiation Pattern at 2450MHz



### PHYSICAL PICTURE

#### Forward

MyAntenna RF Technology Co., Ltd  
 ADD: No.RM 405, R3-A Building, Shenzhen High-Tech Park, Nanshan, Shenzhen, P.R. China.  
 TEL: +86-0755-86503881 FAX: +86-0755-27801677 E-mail: [nfc@myantenna.com](mailto:nfc@myantenna.com)



Reverse

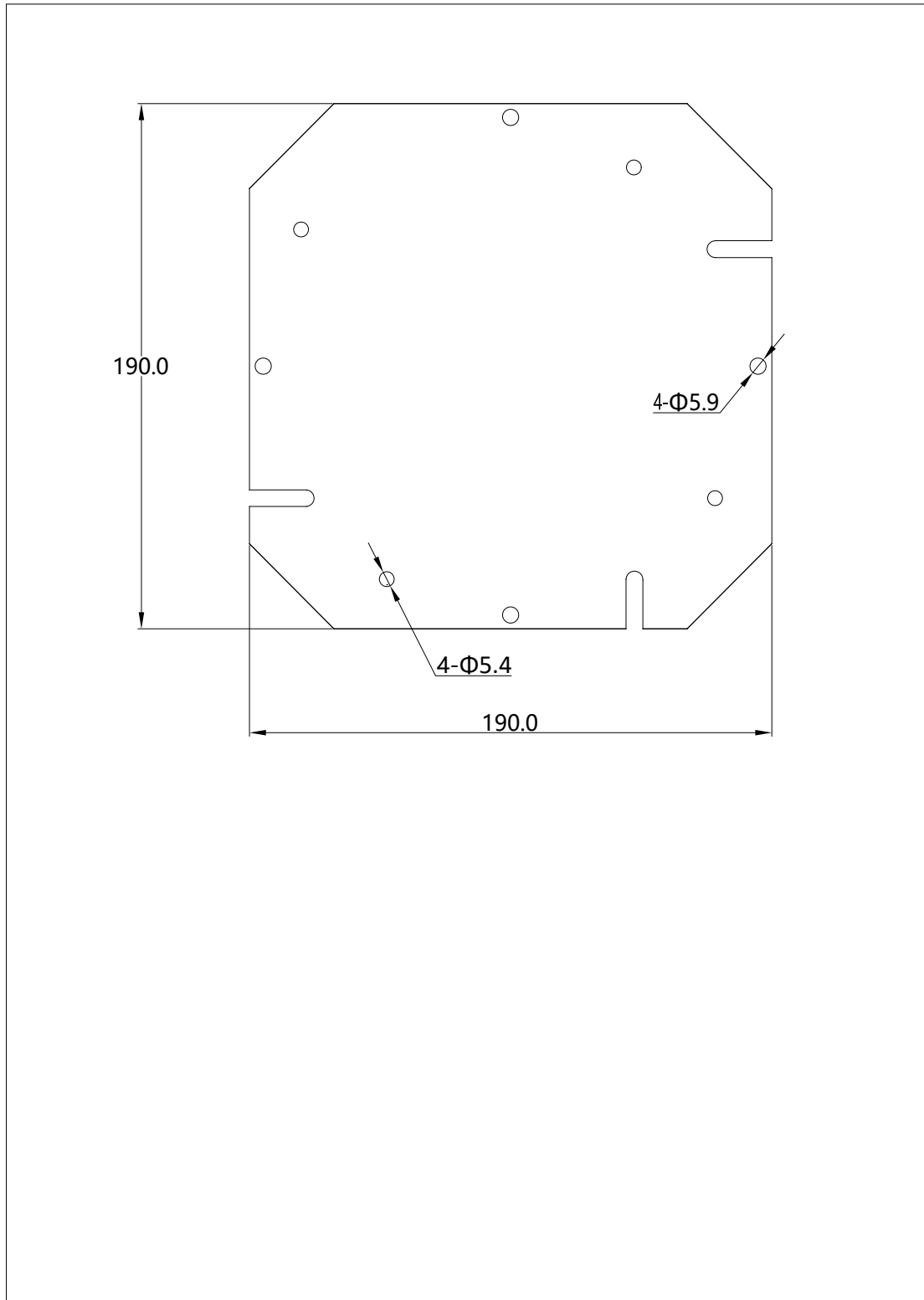


## DIMENSIONAL DRAWING

MyAntenna RF Technology Co., Ltd

ADD: No.RM 405, R3-A Building, Shenzhen High-Tech Park, Nanshan, Shenzhen, P.R. China.

TEL: +86-0755-86503881 FAX: +86-0755-27801677 E-mail: [nfc@myantenna.com](mailto:nfc@myantenna.com)



Aboosty™ is owned by Shenzhen MyAntenna RF Technology Co., Ltd. (often abbreviated as MyAntenna).