

2.4 F29x6 L40CM3 Antenna

FEATURES



- -1.54 dBi Peak Gain
- Welding RG 0.81 cable, Ipex connector, 3M sticker for easy installation.
- For smart device wireless, Zigbee, Bluetooth terminal wireless receiving antenna transmitter antenna
- Mounting to: non-conductive surface
- Installation type: adhesive



PRODUCTS

Part No.	Weight	Dimensions (L x WxH)	Cables Dimensions	Connector	Color
M01-0601390ROA		FPC:29*6*0.2mm	Φ 0.81*40mm	IPX3	Black

SPECIFICATIONS

PARAMETER	SPECIFICATION
Frequency Bands, MHz	2400-2500
VSWR (Max)	3.0:1
Peak Gain, dBi (Typ)	Up to -1.54
Nominal Impedance	50 Ω
Max Power (ambient temp of 25°C)	10 Watts
Azimuth Beam Width (deg)	Omnidirectional
Polarization	Linear, Omnidirectional
Color	Black
Storage Temperature Range (°C)	-40° C to +85° C
Operational Temperature Range (°C)	-40° C to +85° C
Material Substance Compliance	REACH/RoHS Compliant

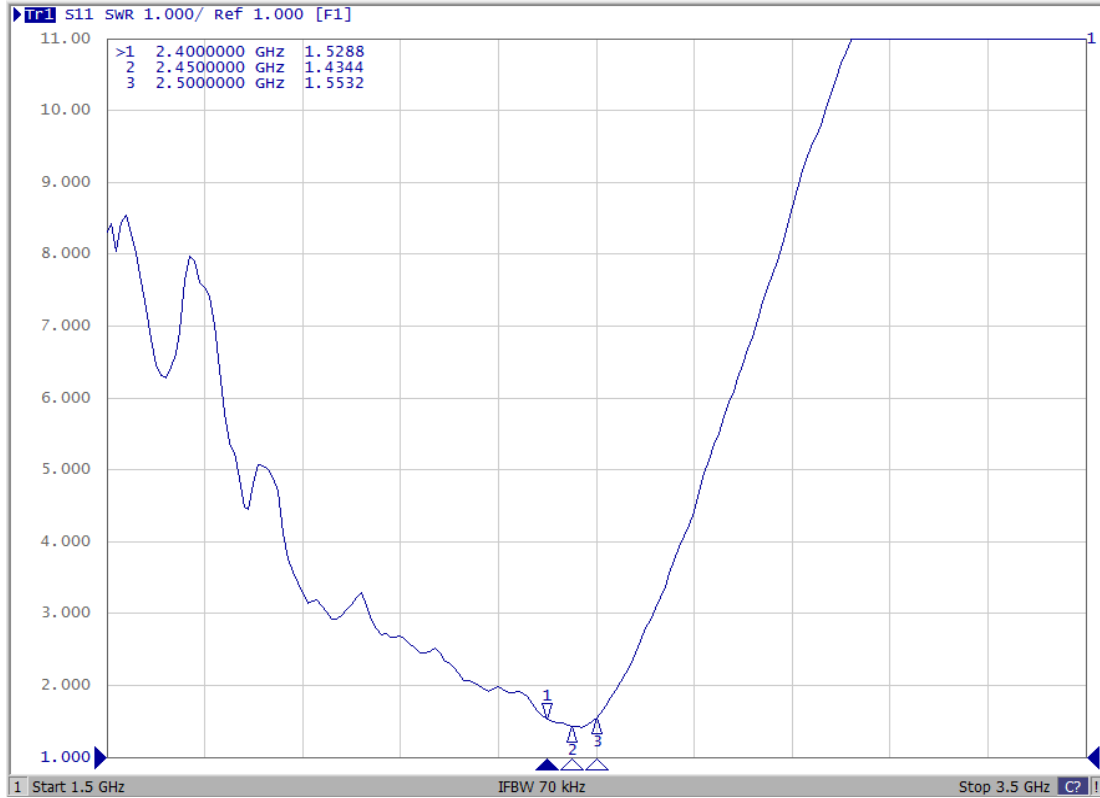
MyAntenna RF Technology Co., Ltd

ADD: No.RM 410, Country Garden Phoenix Wisdom Valley, No. 50 Tiezai Road, Baoan District, Shenzhen, P.R.China.

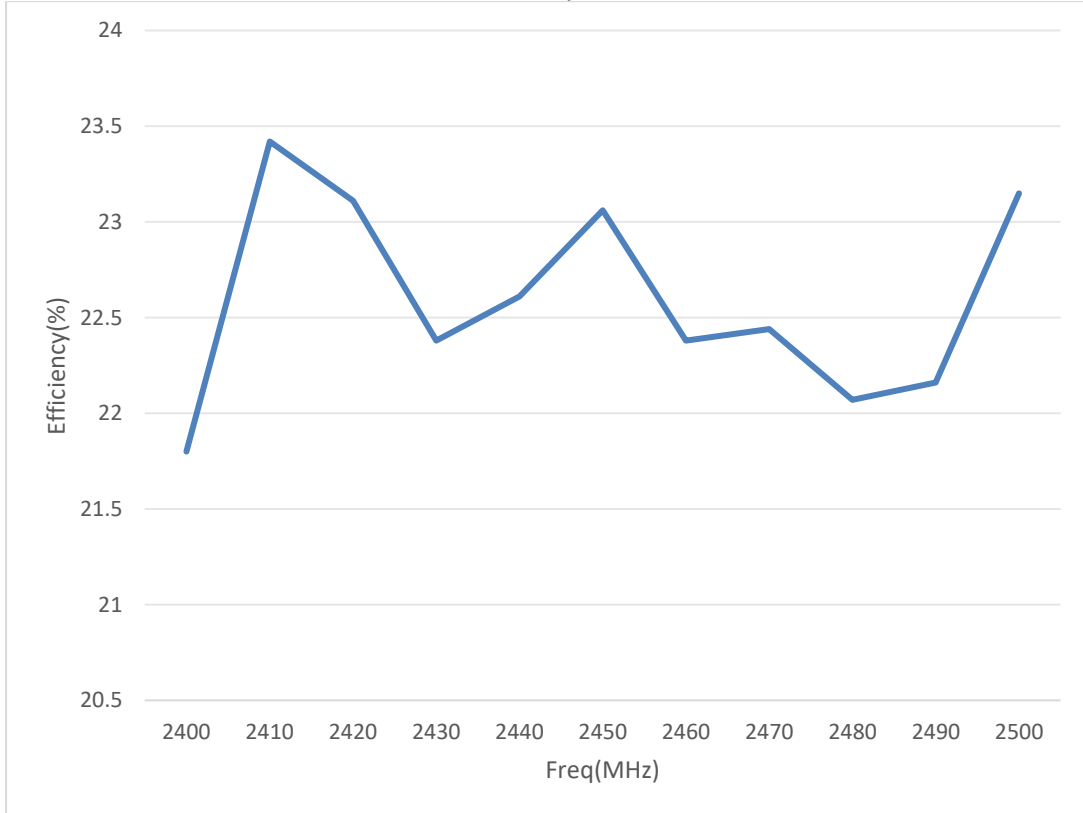
TEL: +86-0755-86503881 FAX: +86-0755-27801677 E-mail: nfc@myantenna.com

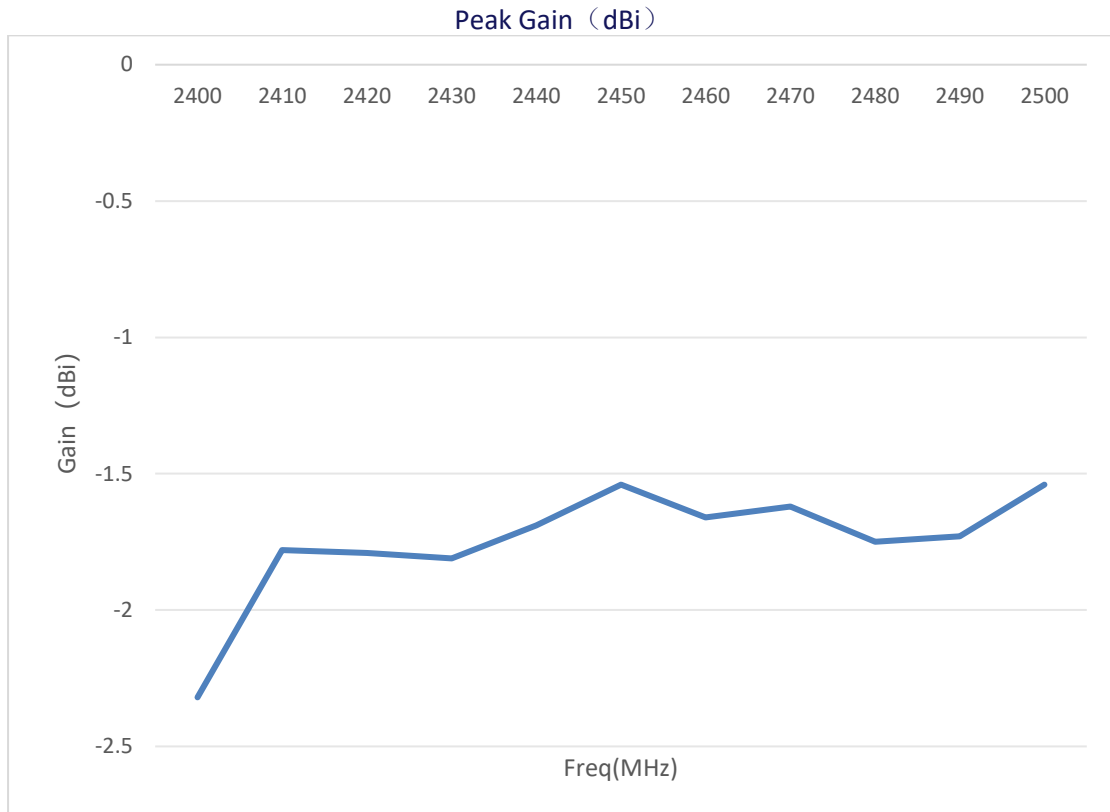
ELECTRICAL DATA

V.S.W.R



Efficiency (%)

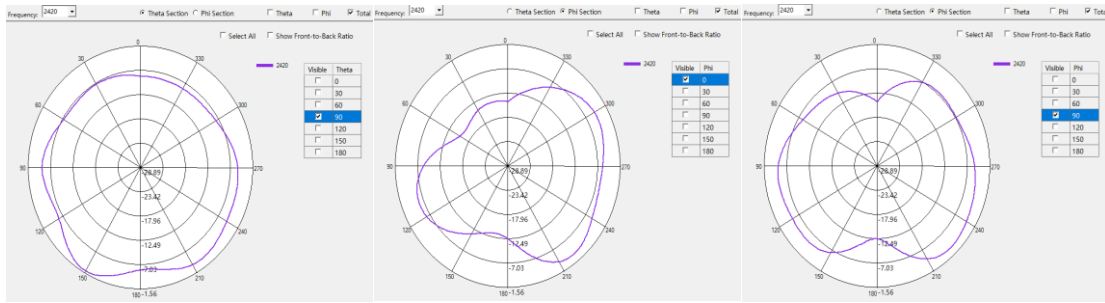




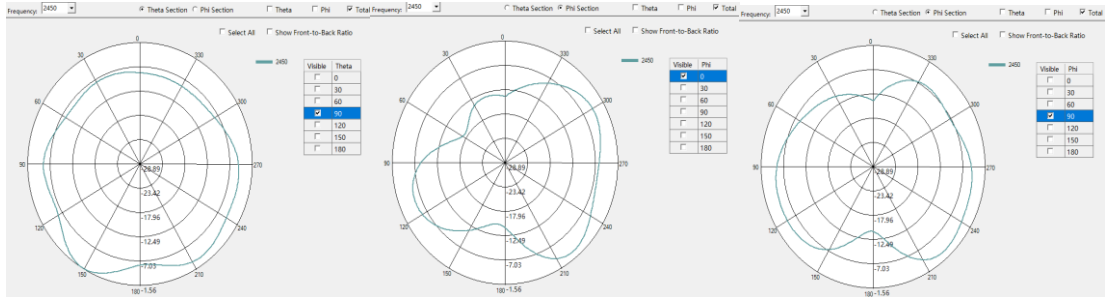
Freq(MHz)	Efficiency(%)	Gain (dBi)
2400	21.8	-2.32
2410	23.42	-1.78
2420	23.11	-1.79
2430	22.38	-1.81
2440	22.61	-1.69
2450	23.06	-1.54
2460	22.38	-1.66
2470	22.44	-1.62
2480	22.07	-1.75
2490	22.16	-1.73
2500	23.15	-1.54

RADIATION PATTERNS

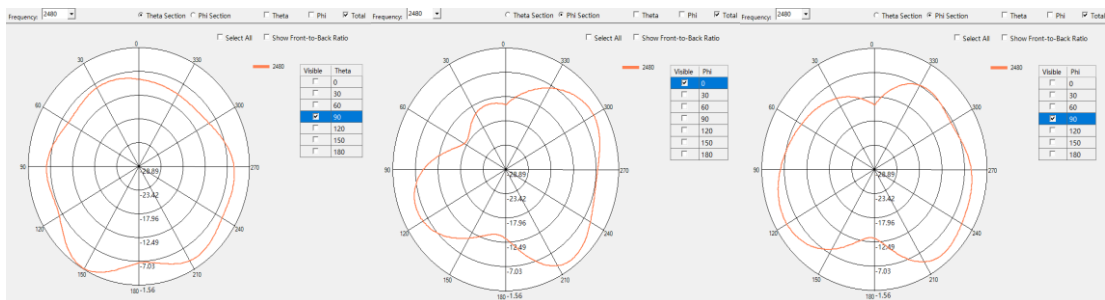
2D Radiation Pattern at 2420MHz



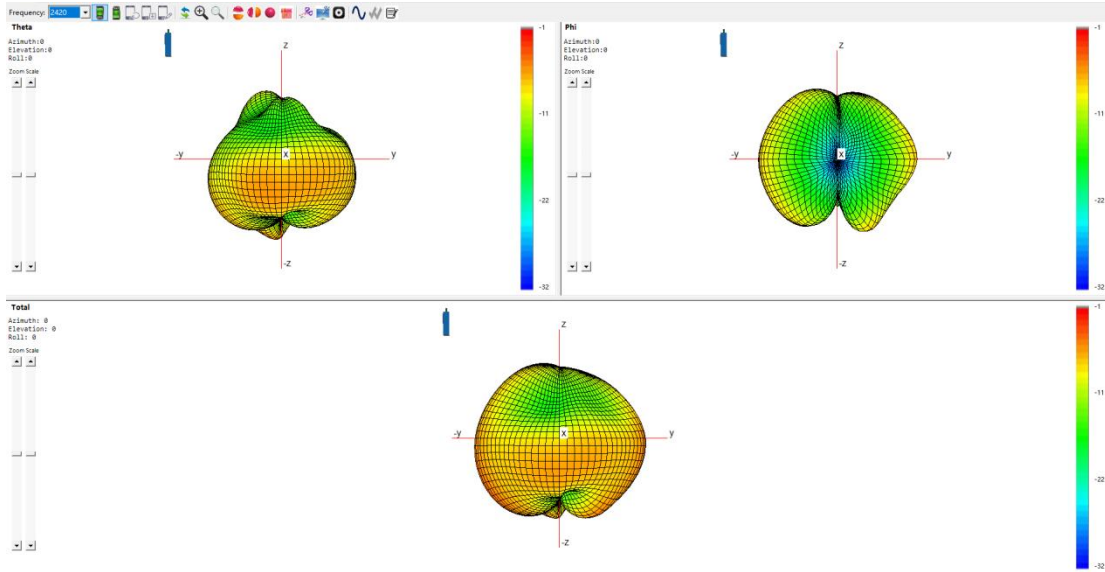
2D Radiation Pattern at 2450MHz



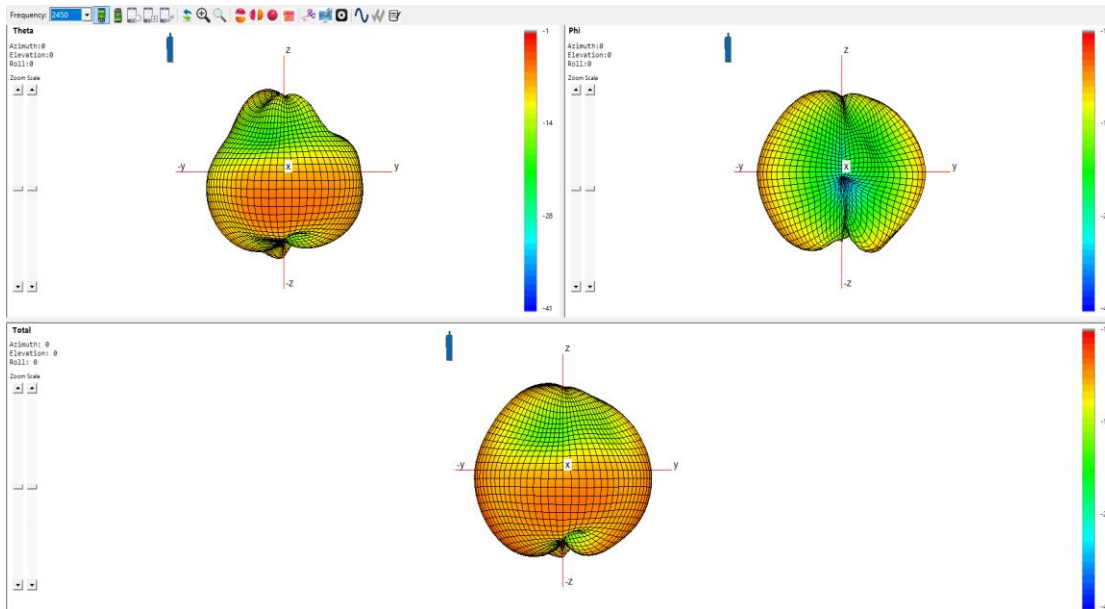
2D Radiation Pattern at 2480MHz



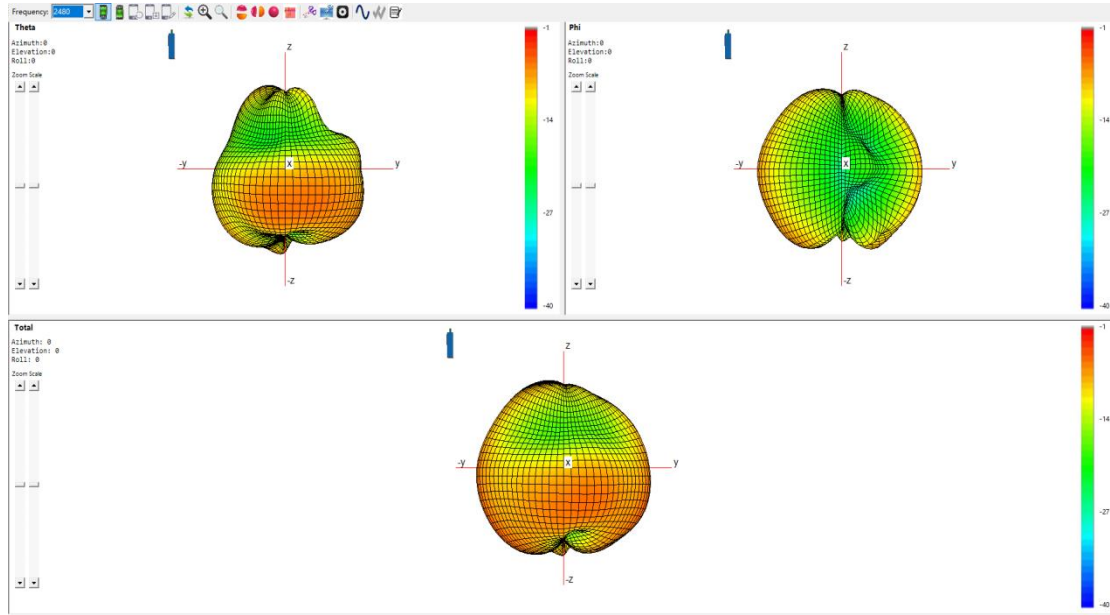
3D Radiation Pattern at 2420MHz



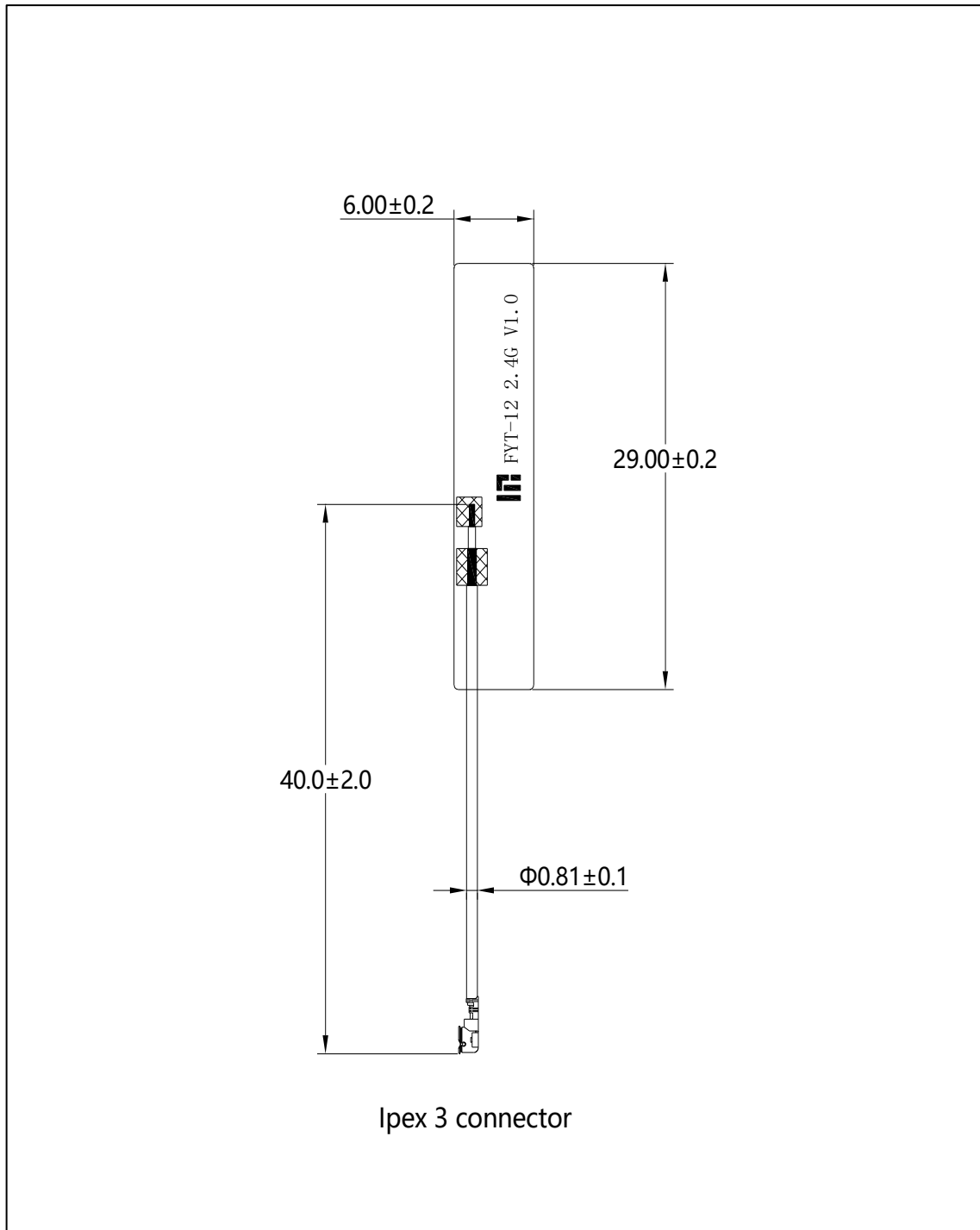
3D Radiation Pattern at 2450MHz



3D Radiation Pattern at 2480MHz



HOUSING CONFIGURATIONS



Abosty™ is owned by Shenzhen MyAntenna RF Technology Co., Ltd. (often abbreviated as MyAntenna).